

A FAMILY AFFAIR

It may be the height of luxury but this house designed by Anna Agapova and Oleg Klodt is also geared to family life

FEATURE KAREN WILSON | PHOTOGRAPHY MIKHAIL LOSKUTOV



HOME TRUTHS

DESIGNERS Anna Agapova of Studio O&A London and architect Oleg Klodt (oa-london.com)

PROPERTY Detached house in the New Forest

WORK Full renovation of the home, plus the build of a home spa/swimming pool complex

HOW DID YOU COME TO BE INVOLVED IN THIS PROJECT? Our clients were newlyweds when they bought their country house in 2015. They commissioned our studio to renovate it and create a new interior, alongside architect Oleg Klodt. Although they knew our traditional style, they wanted us to surpass this and join them in an experiment.

WHAT WAS THE BRIEF? The clients are introverted yet witty people, and with a busy professional life as lawyers, they wanted their house to be a refuge from the hustle and bustle of the city where they could enjoy nature and family life. It is inspired by the notion that a home is a place of belonging, a source of energy and a vessel

that links generations and nourishes human connections. The clients wanted to have a place to gather a big family and spend weekends with friends.

WHAT WERE THEIR BIGGEST PRIORITIES? As they have a five-year old daughter and a six-year-old son, the children's areas are the focal point. In our previous projects, we must admit that by following a reserved approach we have made playrooms too discreet. Here we significantly reconfigured the first floor of the home, where 70% is dedicated to the children, including a big playroom.

HOW DID YOU GO ABOUT CHOOSING THE COLOUR PALETTE? For the ground floor,



HALLWAY

A golden chandelier and the warm tones of wood create a welcoming entrance.

For a similar paint colour, try Below Deck, £46 for 2.5ltr, Coat Paints. Try Westminster Martina globe chandelier, £825, CP Lights

KITCHEN

The bespoke island has a worktop made of volcanic lava stone.

Vibia Cosmos 2510 cluster of three pendant lights, £1,129 each, Inspyer Lighting

SITTING ROOM

'We designed bespoke shelving for our clients' collection of rare books,' says Anna.

Sarana Russett velvet swivel chair, £967, Imagine X Furniture, would work



DINING ROOM

A bespoke chandelier is the statement piece in this cocooning space.

Porada Ziggy dining table in walnut, £5,325, Lime Modern Living, would work here.

Pol's Potten Holy chair in Royal Blue, £334, Shropshire Design, has a similar look. Custom Frequency chandelier, from £22,900, Barocelli

we have a rich colour palette whereas the first floor has more neutral tones. The clients trusted us and were not afraid to try new things; there are green walls in a hall, redwood panels in a bathroom and black doors.

WHAT ARE THE STANDOUT DESIGN IDEAS?

The house is full of bespoke items that were personally designed by us, including a fireplace, doors, window frames – and even a changing table for a baby.

WHAT PROBLEMS DID YOU OVERCOME WITH YOUR DESIGN?

Although the clients didn't have any children when this project started, the brief was to create an environment that would help children grow and fully embrace the joy and freedom of childhood. Over

the four years that it took to design the house, the couple welcomed both a son and a daughter – making the finished project even more special to us. We feel we were involved in the creation of not just a home, but a family.

WHAT WAS THE MOST SATISFYING ASPECT?

We created a timeless interior that feels as though it has been around for a few generations, while incorporating warm, family-orientated overtones.

WHAT IS YOUR ADVICE FOR CREATING A SUCCESSFUL SCHEME?

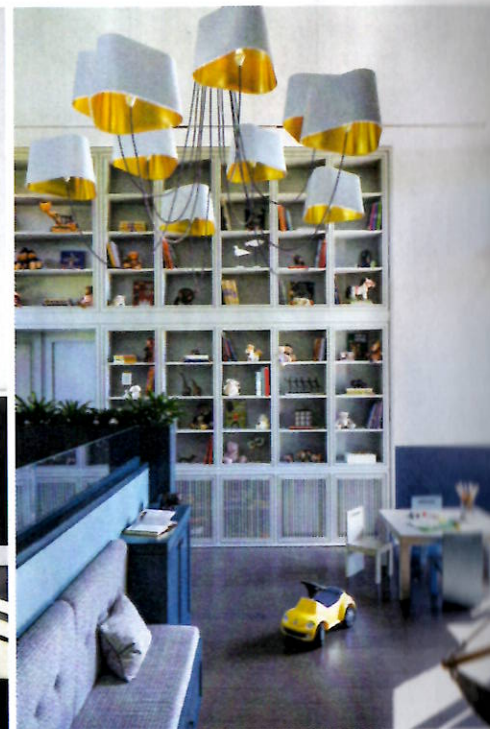
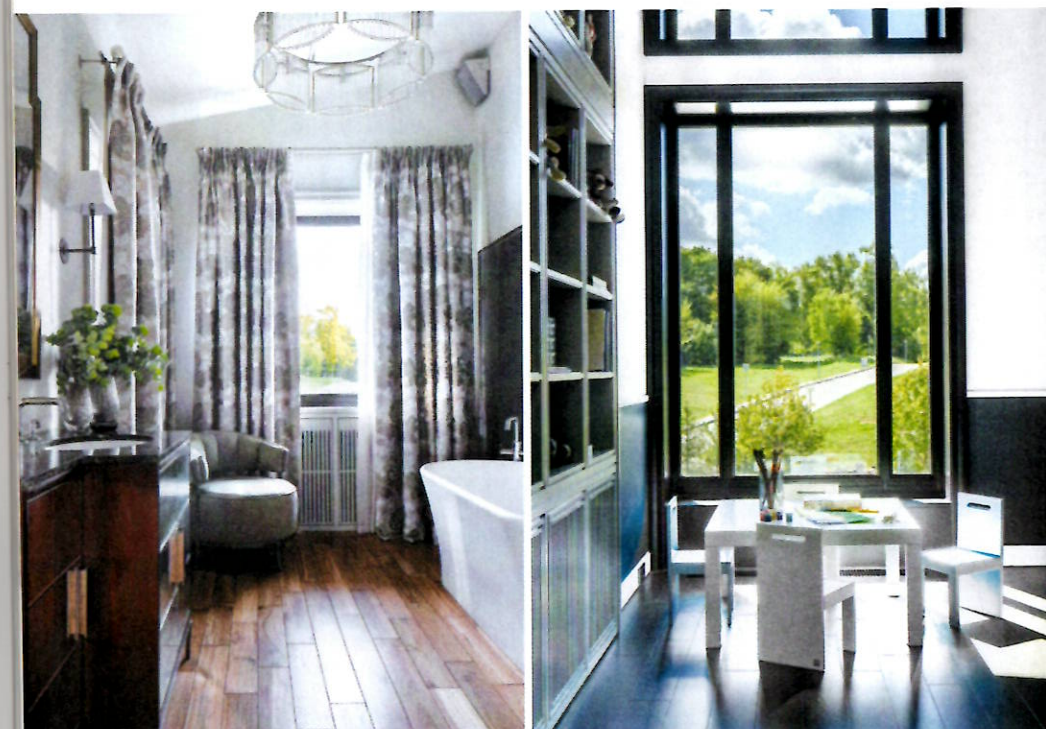
Repeating materials through built-in furniture and using similar colours in small details, such as window treatments, decor and accessories helps achieve an overall cohesive look. 25



MAIN BEDROOM

Muted tones and an upholstered panel wall ensure this is a relaxing sleep space with a boutique hotel feel.

Edward winged bed, from £899, Sueno, would work here. Moooi Heracleum Big O chandelier, from £7,715, Jane Richards Interiors. Fallon dining chair, £580, House of Isabella, is similar



MAIN EN SUITE

Curtains make the space cosy. Licht Im Raum Stilio 800 pendant light, from £3,602, Reuter

PLAYROOM

Rather than being an afterthought, the children's playroom has been given as much design consideration as every other room in the house. Chandelier 10 Grand Nuage, from £3,422, Designheure. Similar table by Muba in Manatee Grey, £265, Nubie

CHILD'S BEDROOM

By creating different levels, Anna has created a fun space where the children can make dens. Albina sheep stool, £468.99, Meier at Trouva. The Massingberd Blossom wallpaper in Yellow, £102 a roll, Little Greene, has similar appeal

